



McLouis, just **starring.**

Since 1999 McLouis has been the reference point in the plein air sector for quality, pleasant, modern and attractively designed vehicles.

Anticipating trends, dictating fashion: this is one of the goals of McLouis, which offers technical and trendy high-end solutions at a competitive price.

Specialist in the production of vans.

Trend of the moment in the panorama of recreational vehicles, the VAN is undoubtedly a highly specific product. For its production, you need a company with a high specialisation in the segment, which takes care of every phase, from design to construction.

McLouis vans are produced in Paglieta plant, in Abruzzo, an industrial district of over 28,000 m² that produces equipped vans for the Trigano group for the whole of Europe.

Close to you, everywhere.

The McLouis sales network today consists of over 200 qualified distribution partners, spread throughout Europe. Through pre- and after-sales services, local staff and on-site distribution agencies, McLouis is able to satisfy even the most demanding customers.



Menfys

Introduction _____	p.6
Standard equipment _____	p.8
Technical data _____	p.10



Menfys S-line

Introduction _____	p.12
Standard equipment _____	p.14
Technical data _____	p.16



Menfys Prestige

Introduction _____	p.20
Standard equipment _____	p.22
Technical data _____	p.24



The vehicles in photo may be equipped with optional specifications.



Menfys VAN

Menfys

MENFYS 3



2+1 | 4 | 5,99 mt

MENFYS 3 MAXI



4+1 | 4 | 5,99 mt

Menfys S-line & Menfys Prestige

MENFYS S-LINE & PRESTIGE 1



2 | 4 | 5,41 mt

MENFYS S-LINE & PRESTIGE 3



2 | 4 | 5,99 mt

MENFYS S-LINE & PRESTIGE 3 MAXI



4 | 4 | 5,99 mt

MENFYS S-LINE & PRESTIGE 4 CS



2 | 4 | 5,99 mt

MENFYS S-LINE & PRESTIGE 5



2 | 4 | 5,99 mt

MENFYS S-LINE & PRESTIGE 4 MAXI



2 | 4 | 6,36 mt

MENFYS S-LINE & PRESTIGE 4



2 | 4 | 6,36 mt





Menfys

and you're ready to go!

The Menfys range is ideal for those approaching the world of vans for the first time. An essential line that offers functional and versatile solutions, with the guarantee of a very experienced, specialized manufacturer.

The modern interior design, with the pleasant colour contrast between grey and white, combined with practicality of use creates a spacious and welcoming environment where you can move freely and relax.

The Menfys range is available in two layouts, Menfys 3 and Menfys 3 Maxi, on Fiat mechanics.

LIVING AREA

- Automotive-style interior, contrasting colours in shades of grey and white
- Dinette with swivel seats that integrate into the living area
- Ergonomically shaped table for easy access and exit for the driver. Removable, can also be used outdoors
- Fabric and imitation leather upholstery
- Capacious squared wall units with aluminium profile and creaking-proof rubber
- Storage compartment above the cab
- Storage door on the side of the dinette



KITCHEN

- Linear kitchen like at home
- Two-burner hob with glass cover
- Integrated steel sink
- Domestic type mixer
- 70 litre compressor refrigerator with double opening, can also be opened from the outside
- Large drawers under the sink and full extension baskets



SLEEPING AREA

- Large beds for comfortable rest
- Ergonomic mite-resistant mattresses
- Slatted bases
- Lifiable or removable bases to manage stowage space as needed
- Capacious stowage wall units and cabinets to store clothes and accessories
- Dinette bed



BATHROOM

- Separate toilet and shower rooms
- Fixed washbasin, above the toilet
- Large shower
- Shower curtain with magnets, removable
- Lowered shower tray: the water does not flow into the toilet area
- Shower rail with separate mixer for ease of use
- Storage compartment with shelf inside the shower
- With opaque window for air and light



MENFYS STANDARD EQUIPMENT



ON-BOARD TECHNOLOGY

- COMBI 4 kW diesel heating
- LED interior lighting
- LED lights under the wall units
- USB sockets in the living and sleeping area



CHASSIS

- Fiat Ducato 2.3 MJ 120 CV, emission class EURO 6D
- Manual climate control
- Driver airbag
- Cruise control
- ESC Special motorhome
- ABS
- 15" steel wheel rims

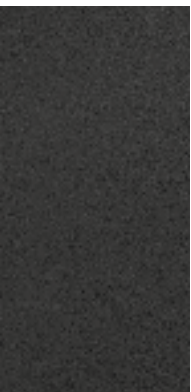
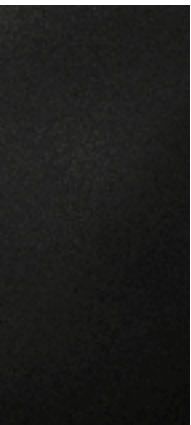
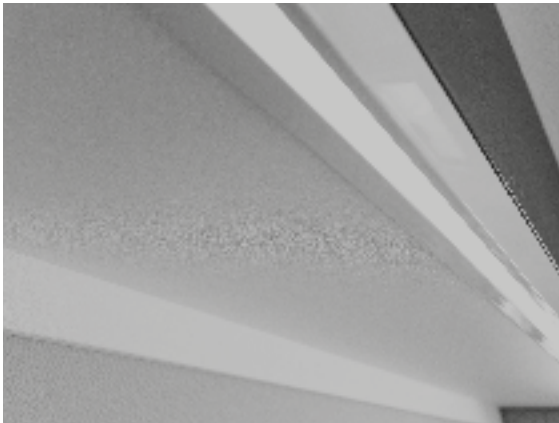


EXTERIORS

- Double glazed windows, fly screen and blind
- Two skylights 40x40 cm
- 5-year infiltration warranty



UPHOLSTERY V-VERSION





Menfys 3

Chassis
Mechanical unit
Engine, Power hp
Maximum technically permissible weight (Kg)
Weight unladen in running conditions Min / Max (Kg)
Pay Load Min / Max (Kg)
Wheelbase (mm)
Maximum towable weight (kg)
Wheels dimensions
Dimensions and places
External length (mm) / External width (mm)
External height (mm) / Internal height (mm)
Homologated seats
Berths
Rear bed (cm)
Rear elevating Bed (cm)
Dimensions Auxiliary bed in Dinette (cm)
Beds with staves
Installations
Burners
Tank capacity : clear water / wastewater (L)
Trivalent fridge (220V, 12V, gas) (L)
Compressor fridge (L)
Standard heating system
Internal insulation material
Floor thickness (mm)
Skylight
400x400 mm skylight
Panoramic skylight 700x500 mm with blind / mosquito net
Fixed, panorama roof in the cab
Openable rear windows
Double-glazed windows with blind / mosquito net

Fiat Ducato
2,3 MJ – 120 CV
3300
2753 / 2933
547 / 367
4035
2500
15"
5995 / 2050
2650 / 1890
4
2+1
190x144
-
180x97
S
2
100 / 90
-
70
4000 Kw DIESEL
POLYURETHANE FOAM
30
2
O
-
-
S

S= standard O=optional - = not available

The mass in running order includes the weight of the empty base vehicle, of the driver (75 kg), 100% of the fuel (60-l tank), fresh water (tank filled with 20 l while travelling), and aluminium gas cylinders (max.7 kg) filled to 90% of their capacity, and tolerance specified in the type-approval (+/- 5%) (2007/46/EC). Anything not included in the standard version of the vehicle, both living unit and chassis, results in an increase in weight in running order with resulting decreased payload up to the possible reduction of approved seats in the case of the total weight for the available payload value. The available payloads result from the difference between maximum permissible mass and running order mass and have a tolerance of 5%. During the purchase phase it is necessary to check the weight of the options to be installed on the vehicle.



Menfys 3 MAXI

STANDARD EQUIPMENT

- 15" steel wheels
- Manual climate control
- Driver airbag
- ESC Special motorhome
- Swivel seats
- Integrated DAB radio aerial
- Slatted bases
- 5-year infiltration warranty

Fiat Ducato
2,3 MJ – 120 CV
3300
2773 / 2933
527 / 347
4035
2500
15"
5995 / 2050
2650 / 1890
4
4+1
186x144 - 186x132
-
180x97
S
2
100 / 90
-
70
4000 Kw DIESEL
POLYURETHANE FOAM
30
2
O
-
-
S



Menfys S-line

**The comfort you want for your
dream holiday**

Spacious automotive-style interiors, ergonomic furniture to move around the van with ease, durable quality materials that are easy to clean: these are the features that make Menfys S-line the ideal travel companion to enjoy a holiday in comfort, whatever the destination.

The Menfys S-line range includes seven layouts, with lengths ranging from 5.41 to 6.36 metres, all of them on Fiat mechanics.



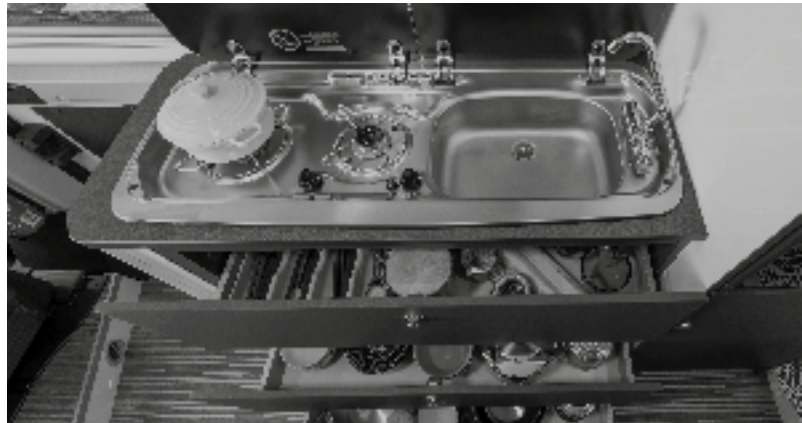
LIVING AREA

- Automotive-style interior, contrasting colours in shades of grey and white
- Seats with ergonomic backrest for greater comfort
- Dinette with swivel seats that integrate into the living area
- Floor hatch for stowage under the dinette table
- Ergonomically shaped table for easy access and exit for the driver. Removable, can also be used outdoors
- Fabric and imitation leather upholstery
- Ergonomically designed furniture with rounded aluminium profiles that ease the passage
- Open-space cab



KITCHEN

- Linear kitchen like at home
- Two-burner hob with glass cover
- Integrated steel sink with glass cover
- Domestic type mixer
- 70 litre compressor refrigerator with double opening, can also be opened from the outside (Menfys 1 and Menfys 4CS) 90 litre compressor refrigerator (Menfys 4 Maxi)
- Three-way refrigerator (Menfys 3, Menfys 3 Maxi, Menfys 4, Menfys 5)
- Large drawers under the sink and full extension baskets
- Innovative, durable and easy to clean materials: high pressure laminate (HPL) for the base of the wall units and the outer side of the kitchen



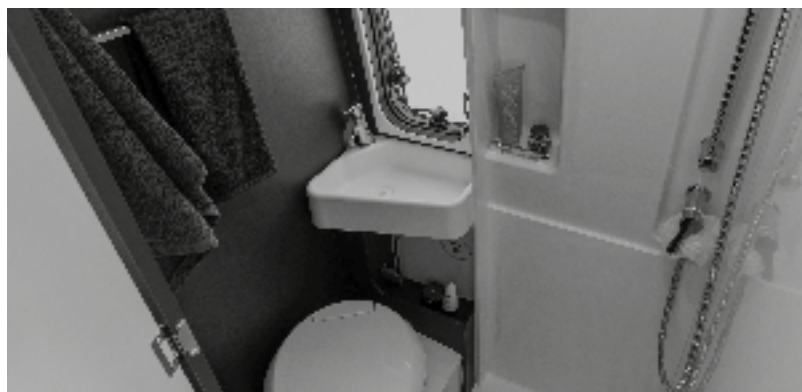
SLEEPING AREA

- Large beds for comfortable rest
- Ergonomic mite-resistant mattresses
- Slatted bases
- Lifiable or removable bases to manage stowage space as needed
- Soft touch in the interior walls for a soft and welcoming effect. Easily washable and mould-proof.
- Capacious stowage wall units and cabinets to store clothes and accessories



BATHROOM

- Fixed washbasin or folding washbasin
- Large shower
- Shower curtain with magnets, removable (where applicable)
- Lowered shower tray: the water does not flow into the toilet area
- Shower rail with separate mixer for ease of use, or pull-out spray tap
- Storage compartment with shelf inside the shower (where applicable)
- With opaque window for air and light



MENFYS S-LINE STANDARD EQUIPMENT



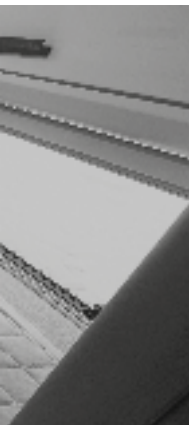
ON-BOARD TECHNOLOGY

- COMBI 4 kW diesel heating
- LED interior lighting
- LED lights under the wall units
- USB sockets in the living and sleeping area



CHASSIS

- Fiat Ducato 2.3 MJ 120 CV, emission class EURO 6D
- Manual climate control
- Driver airbag
- Cruise control
- ESC Special motorhome
- ABS
- Cab swivel seats
- 15" steel wheel rims



EXTERIORS

- Double glazed windows, fly screen and blind
- Openable rear windows
- Two skylights 40x40 cm
- 5-year infiltration warranty



UPHOLSTERY SPORT



Menfys S-line 1



Menfys S-line 3

Chassis
Mechanical unit
Engine, Power hp
Maximum technically permissible weight (Kg)
Weight unladen in running conditions Min / Max (Kg)
Pay Load Min / Max (Kg)
Wheelbase (mm)
Maximum towable weight (kg)
Wheels dimensions
Dimensions and places
External lenght (mm) / External width (mm)
External height(mm) / Internal height (mm)
Homologated seats
Berths
Rear bed (cm)
Rear elevating Bed (cm)
Dimensions Auxiliary bed in Dinette (cm)
Beds with staves
Installations
Burners
Tank capacity : clear water / wastewater (L)
Trivalent fridge (220V, 12V, gas) (L)
Compressor fridge (L)
Standard heating system
Internal insulation material
Floor thickness (mm)
Skylight
400x400 mm skylight
Panoramic skylight 700x500 mm with blind / mosquito net
Fixed, panorama roof in the cab
Openable rear windows
Double-glazed windows with blind / mosquito net

Fiat Ducato
2,3 MJ – 120 CV
3300
2663 / 2883
637 / 417
3450
2500
15"
5410 / 2050
2650 / 1890
4
2
190x133
-
-
S
2
90 / 90
-
70
4000 Kw DIESEL
POLYESTER FIBER + ALUMINIUM
30
2
O
O
S
S

Fiat Ducato
2,3 MJ – 120 CV
3300
2753 / 2933
547 / 367
4035
2500
15"
5995 / 2050
2650 / 1890
4
2
190x144
-
-
S
2
100 / 90
80
-
4000 Kw DIESEL
POLYESTER FIBER + ALUMINIUM
30
2
O
O
S
S

S= standard O=optional - = not available

The mass in running order includes the weight of the empty base vehicle, of the driver (75 kg), 100% of the fuel (60-l tank), fresh water (tank filled with 20 l while travelling), and aluminium gas cylinders (max.7 kg) filled to 90% of their capacity, and tolerance specified in the type-approval (+/- 5%) (2007/46/EC). Anything not included in the standard version of the vehicle, both living unit and chassis, results in an increase in weight in running order with resulting decreased payload up to the possible reduction of approved seats in the case of the total weight for the available payload value. The available payloads result from the difference between maximum permissible mass and running order mass and have a tolerance of 5%. During the purchase phase it is necessary to check the weight of the options to be installed on the vehicle.

MENFYS S-LINE TECHNICAL DATA



Menfys S-line 3 MAXI



Menfys S-line 4 CS

Fiat Ducato
2,3 MJ – 120 CV
3300
2773 / 2953
527 / 347
4035
2500
15"
5995 / 2050
2650 / 1890
4
4
186x144 - 186x132
-
-
S
2
100 / 90
80
-
4000 Kw DIESEL
POLYESTER FIBER + ALUMINIUM
30
2
O
O
S
S

Fiat Ducato
2,3 MJ – 120 CV
3300
2833 / 2972
468 / 327
4035
2500
15"
5995 / 2050
2650 / 1890
4
2
174x75 - 190x62
-
-
S
2
100 / 90
-
70
4000 Kw DIESEL
POLYESTER FIBER + ALUMINIUM
30
2
O
O
S
S

STANDARD EQUIPMENT

- 15" steel wheels
- Manual climate control
- Driver airbag
- ESC Special motorhome
- Swivel seats
- Integrated DAB radio aerial
- Slatted bases
- 5-year infiltration warranty



Menfys S-line 4

Chassis
Mechanical unit
Engine, Power hp
Maximum technically permissible weight (Kg)
Weight unladen in running conditions Min / Max (Kg)
Pay Load Min / Max (Kg)
Wheelbase (mm)
Maximum towable weight (kg)
Wheels dimensions
Dimensions and places
External length (mm) / External width (mm)
External height(mm) / Internal height (mm)
Homologated seats
Berths
Rear bed (cm)
Rear elevating Bed (cm)
Dimensions Auxiliary bed in Dinette (cm)
Beds with staves
Installations
Burners
Tank capacity : clear water / wastewater (L)
Trivalent fridge (220V, 12V, gas) (L)
Compressor fridge (L)
Standard heating system
Internal insulation material
Floor thickness (mm)
Skylight
400x400 mm skylight
Panoramic skylight 700x500 mm with blind / mosquito net
Fixed, panorama roof in the cab
Openable rear windows
Double-glazed windows with blind / mosquito net

Fiat Ducato
2,3 MJ – 120 CV
3300
2903 / 3143
597 / 357
4035
2500
15"
6365 / 2050
2650 / 1890
4
2
195x80 / 190x80
-
-
S
2
100 / 90
80
-
4000 Kw DIESEL
POLYESTER FIBER + ALUMINIUM
30
2
O
O
S
S

S= standard O=optional - = not available

The mass in running order includes the weight of the empty base vehicle, of the driver (75 kg), 100% of the fuel (60-l tank), fresh water (tank filled with 20 l while travelling), and aluminium gas cylinders (max.7 kg) filled to 90% of their capacity, and tolerance specified in the type-approval (+/- 5%) (2007/46/EC). Anything not included in the standard version of the vehicle, both living unit and chassis, results in an increase in weight in running order with resulting decreased payload up to the possible reduction of approved seats in the case of the total weight for the available payload value. The available payloads result from the difference between maximum permissible mass and running order mass and have a tolerance of 5%. During the purchase phase it is necessary to check the weight of the options to be installed on the vehicle.

MENFYS S-LINE TECHNICAL DATA



Menfys S-line 4 MAXI



Menfys S-line 5

Fiat Ducato	Fiat Ducato
2,3 MJ – 120 CV	2,3 MJ – 120 CV
3300	3300
2903 / 3143	2803 / 2963
597 / 357	497 / 337
4035	4035
2500	2500
15"	15"
6365 / 2050	5995 / 2050
2650 / 1890	2650 / 1890
4	4
2	2
-	190x144
190/180x192	-
-	-
S	S
2	2
100 / 90	100 / 90
-	140
90	-
4000 Kw DIESEL	4000 Kw DIESEL
POLYESTER FIBER + ALUMINIUM	POLYESTER FIBER + ALUMINIUM
30	30
2	2
O	O
O	O
S	S
S	S

STANDARD EQUIPMENT

- 15" steel wheels
- Manual climate control
- Driver airbag
- ESC Special motorhome
- Swivel seats
- Integrated DAB radio aerial
- Slatted bases
- 5-year infiltration warranty





Menfys Prestige

**The van for those who don't
settle for it**

Menfys Prestige is dedicated to the most experienced and demanding “van enthusiasts” who are looking for a specialized, customizable and high performance vehicle.

The stylistic touch of McLouis is expressed in the modern design, automotive style, and in the refined and coordinated details, such as the acrylic stone of the kitchen top, the folding table and the washbasin in the bathroom.

Choose the van that will accompany you on your next adventure from seven layouts. The Menfys Prestige models are on Fiat mechanics.

LIVING AREA

- Automotive-style interior, contrasting colours in shades of grey and white
- Seats with ergonomic backrest for greater comfort
- Seat covers coordinated with the fabric upholstery
- Open-space cab
- Dinette with swivel seats that integrate into the living area
- Floor hatch for stowage under the dinette table
- Folding table in acrylic stone for easy access and exit for the driver. Removable, can also be used outdoors
- Fabric and imitation leather upholstery
- Ergonomically designed furniture with rounded aluminium profiles that ease the passage



KITCHEN

- Linear kitchen like at home
- Acrylic stone kitchen top
- Two-burner hob with glass cover
- Integrated steel sink with cover that can be used as a cutting board or shelf
- Domestic type mixer
- 70 litre compressor refrigerator with double opening, can also be opened from the outside (Menfys 1 and Menfys 4CS) 90 litre compressor refrigerator (Menfys 4 MAXI)
- Three-way refrigerator (Menfys 3, Menfys 3 Maxi, Menfys 4, Menfys 5)
- Large drawers under the sink and full extension baskets
- Protective methacrylate shell in the back of the wall unit and at the base of the kitchen unit
- Innovative, durable and easy to clean materials: high pressure laminate (HPL) for the base of the wall units and the outer side of the kitchen



SLEEPING AREA

- Large beds for comfortable rest
- Ergonomic mite-resistant mattresses
- Slatted bases
- Lifiable or removable bases to manage stowage space as needed
- Soft touch in the interior walls for a soft and welcoming effect. Easily washable and mould-proof.
- Capacious stowage wall units and cabinets to store clothes and accessories



BATHROOM

- Fixed acrylic stone sink, or folding washbasin
- Large shower
- Shower separated by rigid folding doors (where applicable)
- Lowered shower tray: the water does not flow into the toilet area
- Shower rail with separate mixer for ease of use, or pull-out spray tap
- Storage compartment with shelf inside the shower, complete with toothbrush holder (where applicable)
- With opaque window for air and light



MENFYS PRESTIGE STANDARD EQUIPMENT



ON-BOARD TECHNOLOGY

- COMBI 4 kW diesel heating
- USB sockets in the living and sleeping area
- LED interior lighting: linear underneath wall units and touch on the roof
- LED strip on external side of the kitchen useful when using the table outside



CHASSIS

- 15" steel wheel rims
- Fiat Ducato 2.3 MJ 120 CV, emission class EURO 6D
- Manual climate control
- Driver and passenger airbags
- Cruise control
- ESC Special motorhome
- ABS
- Cab swivel seats
- Seat covers
- Painted front bumpers



EXTERIORS

- Electric mirrors
- Black grille, headlights and skid plate
- Double glazed windows, fly screen and blind
- Openable rear windows
- Panoramic skylight 70x50 cm
- Skylight 40x40 cm
- Entrance door flyscreen
- LED external light
- 5-year infiltration warranty



UPHOLSTERY SPORT



Menfys Prestige 1



Menfys Prestige 3

Chassis
Mechanical unit
Engine, Power hp
Maximum technically permissible weight (Kg)
Weight unladen in running conditions Min / Max (Kg)
Pay Load Min / Max (Kg)
Wheelbase (mm)
Maximum towable weight (kg)
Wheels dimensions
Dimensions and places
External lenght (mm) / External width (mm)
External height(mm) / Internal height (mm)
Homologated seats
Berths
Rear bed (cm)
Rear elevating Bed (cm)
Dimensions Auxiliary bed in Dinette (cm)
Beds with staves
Installations
Burners
Tank capacity : clear water / wastewater (L)
Trivalent fridge (220V, 12V, gas) (L)
Compressor fridge (L)
Standard heating system
Internal insulation material
Floor thickness (mm)
Skylight
400x400 mm skylight
Panoramic skylight 700x500 mm with blind / mosquito net
Fixed, panorama roof in the cab
Openable rear windows
Double-glazed windows with blind / mosquito net

Fiat Ducato
2,3 MJ – 120 CV
3300
2663 / 2883
637 / 417
3450
2500
15"
5410 / 2050
2650 / 1890
4
2
190x133
-
-
S
2
90 / 90
-
70
4000 Kw DIESEL
POLYESTER FIBER + ALUMINIUM
30
1
S
O
S
S

Fiat Ducato
2,3 MJ – 120 CV
3300
2753 / 2933
547 / 367
4035
2500
15"
5995 / 2050
2650 / 1890
4
2
190x144
-
-
S
2
100 / 90
80
-
4000 Kw DIESEL
POLYESTER FIBER + ALUMINIUM
30
1
S
O
S
S

S= standard O=optional - = not available

The mass in running order includes the weight of the empty base vehicle, of the driver (75 kg), 100% of the fuel (60-l tank), fresh water (tank filled with 20 l while travelling), and aluminium gas cylinders (max.7 kg) filled to 90% of their capacity, and tolerance specified in the type-approval (+/- 5%) (2007/46/EC). Anything not included in the standard version of the vehicle, both living unit and chassis, results in an increase in weight in running order with resulting decreased payload up to the possible reduction of approved seats in the case of the total weight for the available payload value. The available payloads result from the difference between maximum permissible mass and running order mass and have a tolerance of 5%. During the purchase phase it is necessary to check the weight of the options to be installed on the vehicle.

MENFYS PRESTIGE TECHNICAL DATA



Menfys Prestige 3 MAXI



Menfys Prestige 4 CS

Fiat Ducato
2,3 MJ – 120 CV
3300
2773 / 2953
527 / 347
4035
2500
15"
5995 / 2050
2650 / 1890
4
4
186x144 - 186x132
-
-
S
2
100 / 90
80
-
4000 Kw DIESEL
POLYESTER FIBER + ALUMINIUM
30
1
S
O
S
S

Fiat Ducato
2,3 MJ – 120 CV
3300
2833 / 2972
468 / 327
4035
2500
15"
5995 / 2050
2650 / 1890
4
2
174x75 - 190x62
-
-
S
2
100 / 90
-
70
4000 Kw DIESEL
POLYESTER FIBER + ALUMINIUM
30
1
S
O
S
S

STANDARD EQUIPMENT

- 15" steel wheels
- Manual climate control
- Driver and passenger airbags
- Cruise control
- ESC
- Swivel seats with seat covers
- Painted front bumpers
- Black grille, headlight frame and skid plate
- Integrated DAB radio aerial
- Bed nets with slats
- Pleated cab blind
- Folding top table
- Electric step
- Entrance door flyscreen
- 5-year infiltration warranty



Menfys Prestige 4

Chassis
Mechanical unit
Engine, Power hp
Maximum technically permissible weight (Kg)
Weight unladen in running conditions Min / Max (Kg)
Pay Load Min / Max (Kg)
Wheelbase (mm)
Maximum towable weight (kg)
Wheels dimensions
Dimensions and places
External length (mm) / External width (mm)
External height(mm) / Internal height (mm)
Homologated seats
Berths
Rear bed (cm)
Rear elevating Bed (cm)
Dimensions Auxiliary bed in Dinette (cm)
Beds with staves
Installations
Burners
Tank capacity : clear water / wastewater (L)
Trivalent fridge (220V, 12V, gas) (L)
Compressor fridge (L)
Standard heating system
Internal insulation material
Floor thickness (mm)
Skylight
400x400 mm skylight
Panoramic skylight 700x500 mm with blind / mosquito net
Fixed, panorama roof in the cab
Openable rear windows
Double-glazed windows with blind / mosquito net

Fiat Ducato
2,3 MJ – 120 CV
3300
2903 / 3143
597 / 357
4035
2500
15"
6365 / 2050
2650 / 1890
4
2
195x80 / 190x80
-
-
S
2
100 / 90
80
-
4000 Kw DIESEL
POLYESTER FIBER + ALUMINIUM
30
1
S
O
S
S

S= standard O=optional - = not available

The mass in running order includes the weight of the empty base vehicle, of the driver (75 kg), 100% of the fuel (60-l tank), fresh water (tank filled with 20 l while travelling), and aluminium gas cylinders (max. 7 kg) filled to 90% of their capacity, and tolerance specified in the type-approval (+/- 5%) (2007/46/EC). Anything not included in the standard version of the vehicle, both living unit and chassis, results in an increase in weight in running order with resulting decreased payload up to the possible reduction of approved seats in the case of the total weight for the available payload value. The available payloads result from the difference between maximum permissible mass and running order mass and have a tolerance of 5%. During the purchase phase it is necessary to check the weight of the options to be installed on the vehicle.

MENFYS PRESTIGE TECHNICAL DATA



Menfys Prestige 4 MAXI



Menfys Prestige 5

Fiat Ducato
2,3 MJ – 120 CV
3300
2903 / 3143
597 / 357
4035
2500
15"
6365 / 2050
2650 / 1890
4
2
-
190/180x192
-
S
2
100 / 90
-
90
4000 Kw DIESEL
POLYESTER FIBER + ALUMINIUM
30
1
S
O
S
S

Fiat Ducato
2,3 MJ – 120 CV
3300
2803 / 2963
497 / 337
4035
2500
15"
5995 / 2050
2650 / 1890
4
2
190x144
-
-
S
2
100 / 90
140
-
4000 Kw DIESEL
POLYESTER FIBER + ALUMINIUM
30
1
S
O
S
S

STANDARD EQUIPMENT

- 15" steel wheels
- Manual climate control
- Driver and passenger airbags
- Cruise control
- ESC
- Swivel seats with seat covers
- Painted front bumpers
- Black grille, headlight frame and skid plate
- Integrated DAB radio aerial
- Bed nets with slats
- Pleated cab blind
- Folding top table
- Electric step
- Entrance door flyscreen
- 5-year infiltration warranty

**To see more photos and learn
more about our vans, see the
MCLOUIS VANS 2021
CATALOGUE.**



Great news for the McLouis motorhomes!

Discover them in the
motorhomes 2021 CATALOGUE.




The journey continues...

Follow the next destinations on our
YouTube channel and stay up to date
with McLouis news.







The masses indicated in this catalogue refer to the provisions of European Directive 2007/46/EC.

MASS IN RUNNING ORDER

It includes the weight of the empty base vehicle, of the driver (75 kg), 100% of the fuel (60-l tank), fresh water (tank filled with 20 l while travelling), and a gas tank for living purposes (7 kg).

The mass in running order, and consequently the payload and/or certified seats may vary depending on the accessories installed.

PAYLOAD

This consists of the difference between the maximum technically permissible laden mass and the mass in running order. It includes elements for living purposes, the transported passengers defined by the manufacturer (driver excluded), and the personal effects.

The payload calculation is based on the following parameters: 75 kg for each passenger (driver excluded), 10 kg of baggage for each passenger and for the driver, 10 kg for each metre of length of the vehicle, plus the remaining payload, which can be used for the installation of accessories or for additional baggage.

All masses and loads of the empty vehicle have a tolerance of +/- 5%, in compliance with Directive 2007/46/EC.

Any optional equipment increases the mass in running order and decreases the payload.

The weight of non-standard accessories is not included in the mass in running order indicated in this catalogue.

Additional accessories and devices reduce the payload by a quantity equal to their weight; the incidence of the weight of the individual accessories is shown in the special column in the technical data sheets or can be requested at our dealers.

In case certain accessories are installed (for example, additional elements such as coupling device or motorbike rack), the mass of these accessories will affect the payload, possibly reducing it along with the number of certified seats. Please note that the law does not allow the maximum permissible mass to be exceeded, which can be consulted under the specific heading of the data sheets.

Please make sure that the maximum loads on the axles and the maximum technically permissible load mass are not exceeded during the complete loading phase of the vehicle.

The regulations and requirements of each country may entail changes in the characteristics of this table.

The number of certified seats may vary depending on the traffic regulations in force in each country.

When driving, the fresh water tank must be filled to a maximum of 20 litres.

www.mjollnir.ch



mclouis.com

Mjollnir GmbH
in Kooperation mit Camper Iceland

McLOUIS reserves itself the right to change the characteristics and the furnishings of all its models with no advance notice required; all data contained in this leaflet must therefore be considered approximate and non-binding. Despite thorough checks of the contents, we cannot exclude possible printing and/or translating errors. This catalogue does not constitute contractual documentation. Any reproduction, including in part, of the test or of the content of this document is prohibited.

The indicated weights are exclusively approximated. Tolerances of $\pm 5\%$ are allowed. Generally speaking, special equipment and options increase the no-load weight and entail a reduction in the payload. We hereby decline any and all responsibility in case structural changes are made to the vehicle; any assembly, disassembly or changes carried out by unauthorised workshops may jeopardise your safety and cause the warranty clauses to be forfeited. For additional information on installation and technical details, please contact one of our dealers.